



# St. John's Wimborne

New Life, Full Life



# PARISH PROFILE



# CONTENTS

Foreword from the Bishop of Ebbsfleet	3
Introduction to the Vacancy by the Bishop of Salisbury	4
Wardens' Welcome	5
<b>LOVING JESUS</b>	
Our Vision and Values	7
Doctrinal Statement	7
Doctrine	8
Our position on Church of England matters	9
Personal Profile	10
Church Survey - introduction	11
Church Family	12
Parochial Church Council	13
Staff Team	13
Opportunities and Challenges	14
<b>LOVING CHURCH</b>	
A Worshipping Church	
Services and Worship	16
Prayer Life	17
Church Weekend Away	18
A Caring Church	
Welcoming	19
Pastoral Care	19
Creation Care	20
Safeguarding & Safety	20
An Active Church	
Home Groups	22
Small Groups	22
Young Disciples	23
St John's Preschool	25
Finances	26
<b>LOVING WIMBORNE...AND THE WORLD</b>	
Outreach	27
Partnerships and Links	27
Our Buildings and Heritage	30
The Vicarage	32
Wimborne and the surrounding area	33
St John's First School	34
Appendices	
1. Summary of Finances	35
2. Church Properties	36
3. Schools in and around Wimborne	37
4. Other key points of interest in Wimborne	38

## Foreword from the Bishop of Ebbsfleet

The church community at St John's stands as a powerful testimony to the fruitfulness of biblically faithful, gospel-centred, inter-generational Anglican ministry - committed to sacrificially serving their community and nurturing people in their discipleship.

The varied contexts which the church serves will require a leader of particular character and experience: one able to build confidence across the diversity of church members through clear biblical preaching and vision; able to lead and develop the various existing teams to equip and enable their flourishing; able to build bridges of service and care to the local community and beyond, demonstrating and sharing the love of Christ; and able to support the pastoral needs of the church community through a time of great challenge and change in the church, the nation, and the Church of England, while seeking to uphold a historic, biblical faith.

As the Bishop who has granted extended episcopal care to many churches in accordance with the House of Bishops' Declaration, I am delighted to support St John's in discerning the person God is calling to this next chapter in their story of God's grace in Wimborne, and to stand with them and their new Vicar in continuing to uphold and proclaim the life-transforming truths of the gospel.

Yours in Christ,

**+Rob Munro**

**Bishop of Ebbsfleet**



## Introduction to the Vacancy by the Bishop of Salisbury

This post offers an excellent and exciting opportunity for the right candidate to bring their own skills and leadership gifts to a local church rooted in the (conservative) evangelical tradition.

The benefice enjoys an urban outlook within Wimborne town itself, where the parish boundaries are porous and churches enjoy both a local and an eclectic feel. St John's is set within a largely residential area, with the potential to further develop as a community hub, making good use of its church facilities.

The church enjoys a good mix of lay and ordained leadership. In the town there are opportunities for mission and outreach, within ecumenical and deanery partnership across traditions, particularly amongst families and young people.

The deanery is extremely supportive and has worked hard in recent years to work on projects together. It has a developing plan and good leadership, which involves building on the best of each church and community and looking outside the life of the churches to meet local needs. The deanery, as well as Wimborne itself, includes many rural communities, larger villages on the edge of the north Bournemouth conurbation, and some large community churches on housing developments out towards Bournemouth airport. It is a popular area experiencing much new housing growth.

We are looking for an energetic leader who can build on the past and who is able, working with others, to take the congregation on to the next stage of its life. Under the right leadership there is a great deal St John's can offer the wider church in terms of resources, and together with others, including the Minster church, the potential to reach out in creative ways to those who live in the town permanently, those who visit, as well as connect with businesses, and local organisations to make the Church and all we offer in Christ more visible. I expect the new priest to play a full part in diocesan life alongside all clergy.

In turn the parish offers a well-appointed vicarage, some excellent schools and leisure activities for all ages on the doorstep.

Ministry in Dorset is rewarding and enjoyable. My colleagues the Bishop of Sherborne and the Archdeacon of Dorset are senior and collaborative. Should you wish to know more please do not hesitate to pay a discreet visit to take a look around or contact the Rural Dean, the Revd Canon Andrew Rowland, for a conversation on 01202 882340.

We look forward to hearing from you.

Yours in Christ,

**+Stephen Lake**  
**Bishop of Salisbury**



## Welcome to St John's

Thank you for considering this exciting new opportunity for an experienced incumbent or a suitably experienced church leader at St John's Church in Wimborne



We are a medium-sized church family with a rich heritage of conservative evangelical ministry, nestled in the beautiful town of Wimborne, Dorset. We uphold the historic doctrine and articles of the Church of England and contend for these truths in the wider church.

We acknowledge the challenges and opportunities of a diverse congregation of ages and stages within an expanding parish, as outlined in this profile, and welcome the prospect of exploring these with our new vicar.

We are eagerly and prayerfully seeking a godly pastor-teacher who will shepherd us with love and humility. We remain committed to our vision of sharing the New Life and Full Life found in Jesus with Wimborne and beyond, but keen to press into a fuller understanding and working out of this vision with the new vicar.

We're excited to see this happen through the wonderful work of the Holy Spirit as the Bible is faithfully expounded, building up and encouraging our church family to joyfully exercise the gifts of the Holy Spirit in ministry and service to one another and our community.

**Stuart Hull**



**Nigel Day**



Churchwarden Churchwarden





## LOVING JESUS

We trust in Him, follow His ways,  
and delight in His presence.

*Jesus replied: “Love the Lord your God  
with all your heart and with all your soul  
and with all your mind. This is the first  
and greatest commandment.”*

**Matthew 22:37-38**

### Our Vision and Values

As a church, our vision is to encourage all in the Wimborne area to share in the **New Life and Full Life** which is found in Jesus Christ.

We believe we should share the good news about Jesus to those around us, help people to grow in love and knowledge of Jesus, and help them to live out their faith in the world. We work towards this vision by the power of the Holy Spirit and in obedience to God’s Word.

### Doctrinal Statement

St John’s has many decades of conservative evangelical ministry. We submit to the supreme authority of Scripture and prioritise biblical text through expository preaching and Bible study – focusing on the original intent and message and its relevance to us and our world today.

As a church family, whilst we have a range of evangelical viewpoints, we support the work of the Church of England Evangelical Council (CEEC), adhering to their Basis of Faith.

## Doctrine

As a Bible-believing church, we affirm the following key truths of Christianity, as revealed in the Bible:



1. The unity of the Father, the Son, and the Holy Spirit in the Godhead
2. The sovereignty of God in creation, revelation, redemption, and final judgement
3. The divine inspiration and infallibility of Holy Scripture as originally given and its supreme authority in all matters of faith and conduct
4. The universal sinfulness and guilt of human nature since the Fall, rendering man subject to God's wrath and condemnation
5. The full deity of the Lord Jesus Christ as the incarnate Son of God; his virgin birth, and his real and sinless humanity; his death on the cross, his bodily resurrection and his present reign in heaven and on earth
6. Redemption from the guilt, penalty and power of sin only through the sacrificial death once and for all time of our representative and substitute Jesus Christ, the only mediator between God and man
7. Justification as God's act of undeserved mercy in which the sinner is pardoned all his sins and accepted as righteous in God's sight only because of the righteousness of Christ imputed to him, this justification being received by faith alone
8. The need for the Holy Spirit to make the work of Christ effective to the individual sinner, granting him repentance toward God and faith in Jesus Christ
9. The indwelling of the Holy Spirit in all those thus regenerated, producing in them an increasing likeness to Christ in character and behaviour (fruit of the Spirit), and empowering them with the gifts of the Spirit for their witness in the world
10. The only holy universal Church which is the Body of Christ to which all true believers belong
11. The future personal return of the Lord Jesus Christ who will judge all people, executing God's just condemnation on the impenitent and receiving the redeemed to eternal glory

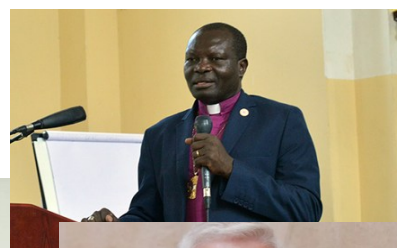
## Our position on Church of England matters

### Response to *Living in Love and Faith* (LLF)

The PCC have been following progress of LLF intently and have held many discussions and made several key decisions to enable St John's to continue prayerful ministry that holds with our theological position.

As a church (resolution passed by the PCC in September 2021), we affirmed the video "The Beautiful Story", which was produced by the Church of England Evangelical Council in response to the questions raised by *Living in Love and Faith*.

In 2023, we hosted a day conference with speakers including Archbishop Justin Badi Arama (Chair, Global South Fellowship of Anglicans), Bishop Julian Henderson (Strategic Director of the CEEC) and Canon John Dunnett.



The PCC passed a resolution that, from January 2024, payments for our parish share are to be made directly to the Ephesian Fund, following the Standing and Finance Committee's recommendation to cease making share payments directly to Salisbury Diocese.

We are committed to, and have continued contributing 100% of our parish share, having held discussions with the diocese on how this is recognised without compromising our theological position.

### Alternative Episcopal Oversight

We are grateful to Bishop Stephen for allowing us to receive the ministry of Bishop Rob (the Bishop of Ebbsfleet). Whilst there are varying theological positions about the role of women in ministry amongst those within the church family, a resolution was passed by the PCC in March 2022 that, on the grounds of the theological conviction of our ministers, arrangements are made in accordance with the House of Bishops' Declaration on the Ministry of Bishops and Priests. Additional spiritual oversight was also requested in January 2024 in response to the Bishops of the Diocese all supporting the Prayers of Love and Faith.



## Who we seek - Personal Profile

We are seeking an experienced incumbent or a suitably experienced church leader. A person of faith and prayer who will lead us in faithfulness and love. We long to grow as a church family – both in our spiritual maturity and in our witness to the local community. We believe God is calling someone to teach and disciple us with clarity and grace, equipping us to live out and share the good news of Jesus Christ more effectively.

### **Essential Requirements - We are seeking someone who:**

- Holds to a biblical evangelical theology, as per our doctrinal statement
- Holds to the historic Christian teaching on human sexuality and marriage
- Welcomes and expects the work of the Holy Spirit in guiding, empowering and renewing both the individual believer and the church community
- Is a gifted and inspiring Bible teacher, able to apply God's word faithfully to everyday life
- Have team leadership within a church context and organisational experience, including staff and budget management

### **With these key gifts and experience:**

- Models' maturity, humility and integrity in life and leadership
- Communicates well and leads collaboratively, bringing vision with practical skills to move forward together
- Can nurture and develop leadership in others, and encourage others to use their gifts in ministry
- Has a pastoral heart for people of all ages
- Has experience in mission, outreach and community engagement

### **Desirable Requirements - It would be an added blessing if you:**

- Are eager to build relationships with local gospel-hearted churches

## Our Commitment to You

### **We are committed to supporting our future vicar through:**

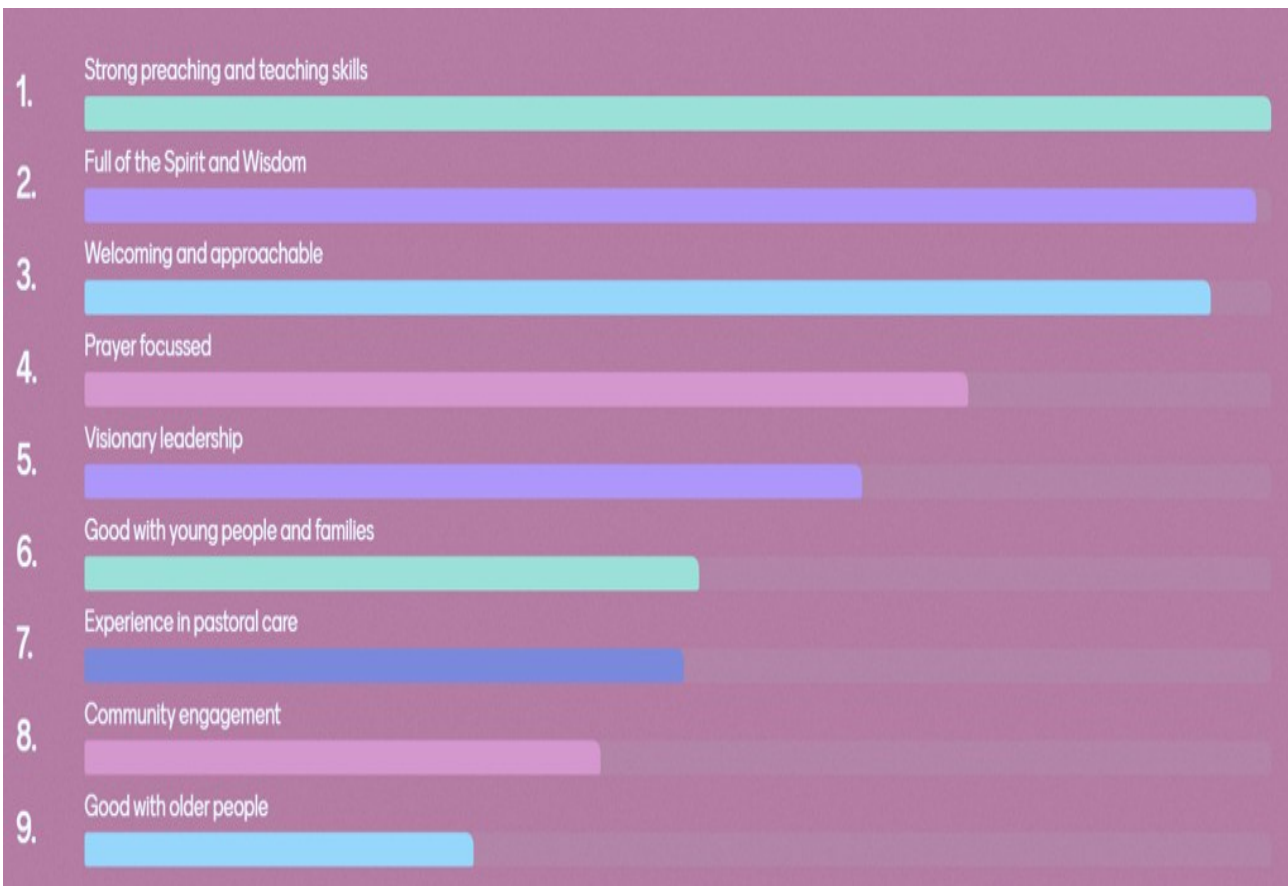
- Prayer
- Practical support – Our leadership team, staff team, and many volunteers are committed to supporting you.
- Personal care – safeguarding time for spiritual refreshment, preparation, rest and family life
- Ongoing development – encouraging your continued training and growth in ministry



## Church Survey

We recently conducted a survey of 15 questions to find out more about the views of our church community. Some of the results and quotes appear in this profile while others will provide invaluable information to guide our new Vicar as he settles in to his role.

**We asked our church family to rank from 1 to 9 the following qualities they value in a Vicar:**



**“Primary requirement in Christian leadership is godly character.”**

## Church Family

St John’s is blessed with a warm and welcoming church family. Most of us live locally in Wimborne or the surrounding villages, and many have been part of the church for years — though we also continue to welcome newcomers who find a spiritual home with us.

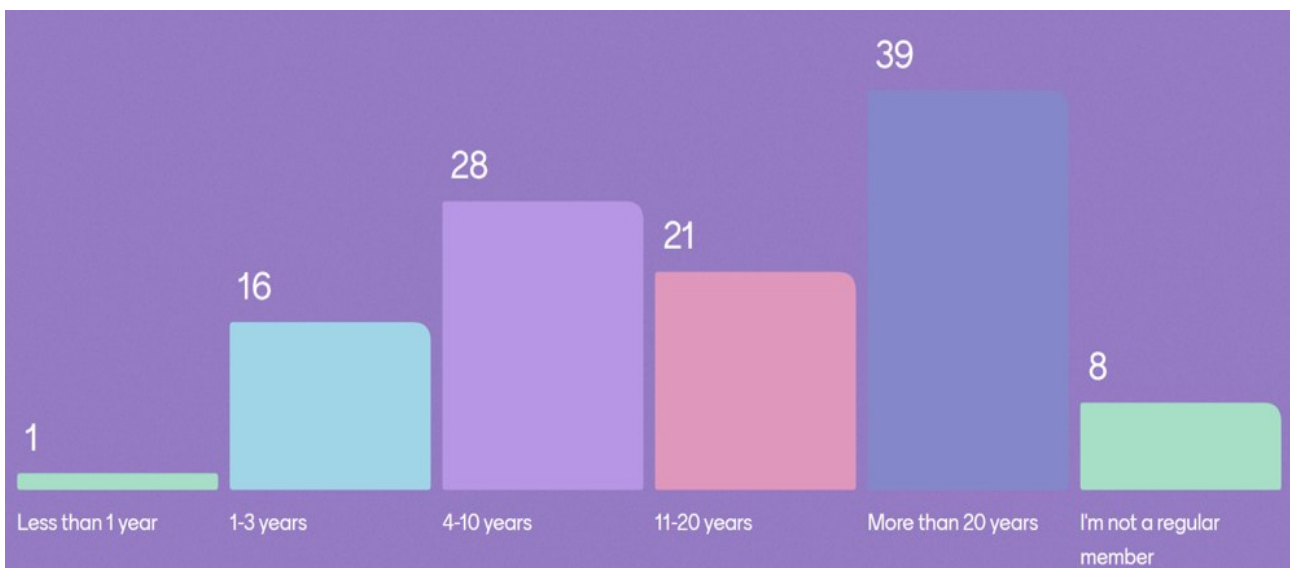
Our congregation holds to a broadly conservative evangelical understanding of the Christian faith. We value the authority of Scripture and the centrality of Christ in all we do. While we share much theological unity, there is also a healthy breadth of thought among us. We are grateful for a church culture that allows for gracious and respectful discussion around areas where views may differ from traditional evangelical positions.

We are united in our desire to grow in faith, live out the gospel, and see others come to know Jesus. This unity is something we treasure — a shared vision that draws together people from a variety of backgrounds, life stages, and experiences.

St John’s is also a church where people of all ages play a valued part. Our Worshipping Community currently consists of 334 adults and 41 children. The average Sunday attendance is 220.

### Church Survey

We asked how long members had been part of the church family



“I have been at St. John’s for 50 years, it is my home”

“Only recently moved to the area. Already feel part of the church family”

## Parochial Church Council and Church Leadership

The PCC consists of around 20 members who meet at least 6 times a year. It has five sub-committees: Standing and Finance, Global Action, Young Disciples, Preschool, and Building Management. Their recommendations are received and discussed by the PCC.



We are blessed with a mixture of men and women on the PCC and in leadership positions, such as leading services and home groups. Our new Vicar must be willing to embrace our current position where women hold key roles within the church, whilst respecting the differing views that exist on women in leadership

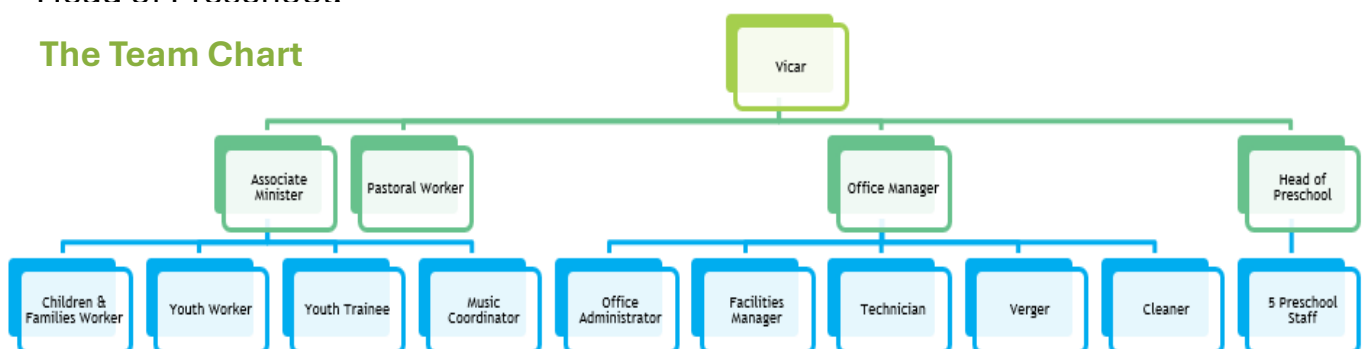
### Staff Team

We are currently blessed with a relatively large team who use their God-given gifts and experience to serve the church family, supporting our many volunteers and ensuring ministry and operations run as smoothly as possible.

The team includes our Associate Minister, Matt Lee, who joined in July 2018 as Curate. He was appointed as Associate Minister in July 2022. One of his roles is to oversee the work with children and young people.

Other ministry staff include Children's and Young Families Co-ordinator, Youth Worker, Ministry Trainee and Pastoral Care Co-ordinator. The support team include Office Manager, Office Administrator, Facilities Manager, Music Co-ordinator, Technician, Cleaner and Vergers. Additionally, the PCC employs our Head of Preschool.

### The Team Chart





## Opportunities

God has laid many open doors before us. The key opportunity we have is to **develop our Vision and Values** with our new Vicar.

Some of the areas we would like to explore over the next few years include:

### Ministry Development and Discipleship

- ◆ Growing our work with young people now we have a full-time Youth Worker
- ◆ Strengthening discipleship through mentoring and small group networks
- ◆ Developing music worship
- ◆ Training and development to better equip volunteers and lay leaders
- ◆ Expanding provision for singles and working people
- ◆ Building pathways for newcomers

### Outreach and Mission

- ◆ Expanding outreach and mission activities, both seasonal and relational
- ◆ Understanding changing local needs and responding with appropriate community outreach programmes
- ◆ Reaching the unchurched in an expanding parish and wider community
- ◆ Further development of ecumenical links

### Worship

- ◆ Reviewing the format and style of our evening services to appeal more to younger people

### Church Survey

*We asked the church family what they see as the biggest opportunities for St John's. These were the top answers*



## Challenges

We are prayerfully discerning how to respond to our challenges in faith and unity. These include:



### Community Outreach & Evangelism

- ◆ Reaching an expanding community
- ◆ Engaging non-Christians
- ◆ Encouraging evangelism

### Engagement Across All Ages

- Responding to a growing need for meaningful discipleship
- ◆ Exploring our music worship to reflect recent feedback from our congregation with the potential for further review
- Balancing competing commitments - helping families and young people engage consistently while accommodating busy schedules and Sunday commitments
- ◆ Bridging generational gaps and fostering meaningful connections that serve both older members and younger demographics

### Resources and Growth

- ◆ Balancing financial priorities between essential building maintenance and ministry expansion
- ◆ Developing volunteer capacity to support growing ministries while maintaining pastoral care for all

### Church of England Matters

- ◆ Managing changes and maintaining unity

## Church Survey

*We asked the church family what areas they thought could be improved or developed. These were the top answers*





# LOVING CHURCH

We want to be a church where every member is loved and cared for and knows that they have a part to play.

*“Now you are the body of Christ, and each one of you is a part of it”*

**1 Corinthians 12:27**

## A Worshipping Church

We gather for worship each Sunday at 10:30am and 6:30pm. These services typically last around 60–75 minutes and are live-streamed for those unable to attend in person. Sermons are expository, usually part of a series through a book of the Bible, and last 20–25 minutes.

### Services

The Sunday morning service includes prayers and confession, reading and talk, worship (led by a band and singers), and occasional interviews/quizzes/reflection/videos. On most Sundays the children go out to their groups, with all-age services during the summer, at Christmas and Easter, and special occasions such as Mother’s Day and Father’s Day. The Sunday sermons follow a series and do not follow the Church of England lectionary.

The Sunday evening service currently has fewer numbers and includes those who only come to the evening service, as well as some who come to both services. It too follows an order of service with the aim of being a little more relaxed.

The Lord’s Supper is celebrated monthly: at the 10:30am service on the first Sunday and at the 6:30pm service on the third Sunday.



## Midweek Communion

Additionally, we hold midweek communion on the second and fourth Thursdays each month.

## Music in Worship

We particularly enjoy our congregational singing at St John's and are grateful for a gifted team of musicians and singers who lead us in a variety of musical styles, always seeking to glorify God and encourage heartfelt worship.



We encourage musicians and singers of all ages and welcome involvement in this ministry. There is a diversity of instrumental players to provide harmonies and descants to the sung worship. Our recent survey indicated an appetite to review and develop music worship.

We have a part-time Music Co-ordinator who is responsible for nurturing and recruiting musicians, arranging the bands and providing suitable music for songs. There is a Christmas Choir each year and three dedicated Carol Services. At Easter, we provide musicians for the ecumenical service on Waitrose Green.

## Prayer Life



At St. John's, we aspire to be a praying church and long for our prayer life to flourish.

We hold a monthly Prayer Focus evening on the first Wednesday of the month and have a Prayer Chain with over 30 members. The 'Boiler Room' is a small group who meet to pray for an hour every Saturday morning (currently online).

On two or three occasions through the year we hold a 'Help, Hope and Healing' service on a Sunday evening which includes prayer ministry and optional anointing with oil.

We would like to explore new ways of praying together and making prayer more central to our church life, for example, through the appointment of a Prayer Coordinator.

### Church Weekend Away

Each year we hold a Church Weekend Away – an opportunity to deepen our fellowship, enjoy biblical teaching, and have fun together across the generations. It culminates in a joyful celebration service back at St John’s, followed by a shared meal.

It’s a highlight of our church calendar and a great way for newer members to get to know others.

*Bishop Julian Henderson spoke from the book of Hebrews about certainties in an uncertain time over the church weekend away in July ‘25*



# A Caring Church

## Welcoming Newcomers

We love to welcome new people to St John's. Our leaders, preachers, welcome team, staff and wider church family endeavour to ensure everyone is made welcome and connected into the life of the church quickly. We hold termly Welcome Lunches to provide more details on how new people can become involved, to introduce some of the staff and ensure they feel welcomed and cared for.

It is wonderful to witness the 'quiet revival' in our own church, with many young people coming to St John's in recent months. Quite a few of these are younger men and women who have joined our SOUL group. It's exciting to see this group grow and welcome newcomers.

## Pastoral Care

At the heart of our pastoral care is the truth that we are loved by God. As 1 John 4:19 reminds us, "We love because He first loved us."



At St John's, we want that love to be experienced deeply across the whole church family — not only in formal structures, but in daily life. Our Home Groups, ministry teams, and friendships are the primary channels of pastoral care. We encourage everyone to be part of a group, where trust and community can flourish.

For those in need of more specific support, our trained Pastoral Care Team is ready to help. Whether it's through a meal after illness or a listening ear in hard times, we aim to ensure no one feels overlooked or alone.



Team members receive training and ongoing support, including regular one-to-one check-ins and termly team meetings. The pastoral team encourage our church family and strive to ensure everyone feels noticed, cared for, and valued. This is not a task for a few individuals

**"Pastoral care is extremely good and caring"**

alone - it's something we all share. Therefore, we encourage every member of St John's to be intentional in reaching out to others, especially on Sundays: look out for those who are new, alone, or in need of encouragement.

## Creation Care



As part of its discipleship and mission, St John's has an active and committed Creation Care Team who encourage the church family to care for God's Earth in all aspects of church life: worship & teaching, buildings, land, community and global engagement, and lifestyle. In recognition of this, we achieved an Eco Church Bronze Award. In addition, the group organises a range of activities including the annual Churches Count for Nature (a national survey of church grounds), making our land more nature-friendly, and growing vegetables in the church office garden for the local community food supply.

The team is involved in community activities as an affiliated member of Planet Wimborne. It also provides helpful information on local initiatives for reducing, reusing, recycling, repairing, refilling and rethinking about how we live, and is helping the church to embrace changes to enable us to become carbon neutral in line with the Church of England's 2030 target.

## Safeguarding



Safeguarding is of paramount importance at St John's, and we are continually seeking to review and improve safeguarding practices.

PCC members undertake safeguarding training and regularly review our policies and church activities. We follow an action plan to align with diocesan requirements and have adopted the 'Responding Promptly to Every Safeguarding Concern or Allegation' procedure.

We recognise that our work with children, young people and vulnerable adults is the responsibility of the whole church community and, as well as being fully committed to acting within current legislation, guidance, national frameworks and the Diocesan Safeguarding procedure, we also endeavour to act in a transparent and accountable way in working partnership with the Diocesan Safeguarding Advisers and other external agencies to safeguard children and

vulnerable adults and assist in bringing to justice anyone who has committed an offence against them.

We have two highly experienced members of the church family acting as Parish Safeguarding Officers (PSOs), and we currently have over 100 members of the congregation with valid DBS certificates, involved in a wide range of ministries with children and vulnerable adults. All staff and volunteers regularly undertake safeguarding training at the appropriate level.

We want to ensure that any vicar is proactive in upholding and evaluating policies which ensure that the vulnerable are protected and that we are promoting a safer church.

## Safety

We are committed to providing a safe and welcoming environment for all who come to St John's.

Our PCC takes responsibility for health and safety matters seriously, ensuring that appropriate resources are available to meet legal requirements and good practice guidelines, in addition to raising awareness amongst the church family.

We regularly review our policies and practices, conduct risk assessments for events, and maintain an up-to-date Health & Safety Policy, accessible via our website.

## Church Survey

*We asked the church family what aspects of church life work particularly well. These were the top answers*



## An Active Church

There are lots of activities and events at church where people from the Wimborne area can encounter our church community. But we also encourage each Church family member to be a witness in the communities and groups where God has placed them. Rather than using all our time and energy running a fixed set of programmes, we want to be entrepreneurial in using our gifts and opportunities.



### Home Groups

Home groups are at the heart of church life at St John's. We currently have around 240 people meeting in 22 Home Groups across Wimborne and the surrounding areas. These groups meet fortnightly, during the day or evening, and are a vital place for spiritual growth, prayer, fellowship and pastoral care.

Most groups follow a Bible study curriculum, usually compiled by the clergy team, helping members to go deeper in their understanding of God's Word and apply it in their lives.

*Some of our home group leaders*



### Small Groups

The church centre is filled with regular and occasional church and community activities that are intended to serve all age groups. These include Bible study groups, wellbeing groups, children's groups, youth groups, seniors' groups and church-wide and gender-specific activities and meals.



## Young Disciples

Our children's and youth work covers a range of activities and events focussed upon two strands: 1) building up our young disciples; 2) reaching families in our community. St John's has had a long history of intentionally focussing on these areas through financial investment, staff and facility provision.



Our work with church families is underpinned by focusing on discipleship, being parent-led, and integrated into church life. We have a range of groups on Sunday mornings when children begin in the church service for 15 minutes and then have bespoke groups in our rooms. We also hold All-Age services on seasonal

events with families involved in these. To help support parents we have a monthly Parent's Network (6-12 families attend) aimed at equipping and encouraging them in their significant role through talks and discussion groups.

We offer a range of mid-week activities that attract a lot of people, including Tots and Toys toddler groups, Thursday CORE (evenings of fun for Years 5-8 with a Christian message shared each



week), and Friday FUSE (which developed out of a Youth Alpha course) – this is a growing ministry, having doubled this year to 20-25 youth in Years 9-13.

Our Youth Worker has pioneered a new area of ministry called SOUL (Year 12 upwards) focussed on informal meetings for those spiritually open for Bible discussions and social time. This is a key area of potential growth and an opportunity to share ministry with one of our Global Action Partners, Streetlight.



We hold seasonal events like Messy Easter, Messy Christmas, GLOW - a Halloween alternative of activities and food finishing with fireworks attracting 100+ every year, KidsVenture - a summer holiday club, and new this year - youth services for Christmas and Easter led by our older youth in Friday FUSE. These all enable us to

reach families across the community and often draw newcomers into further church life.

Our Children and Young Families Coordinator has developed healthy links with local churches in the Deanery and many local schools. A team of 6 local churches run Experience Easter with a team of 45 volunteers to share the good news of Easter with 500 plus pupils from 9 local first and middle schools.



Members of St John's and Wimborne Minster work together to lead Open the Book assemblies, fortnightly in Wimborne First School.

After three years without a Youth Worker, we were delighted to appoint our part-time Youth Worker into a fulltime position in August 2025, following a successful year in the part-time post. Both the Youth Worker and Children's and Young Families Coordinator have good links with local churches and Christian projects and help coordinate a network of children's workers who run events for families and volunteers.

*Young people running rings around the adults during a game of rounders at our recent Church Weekend Away*



## St John's Preschool

There has been a Playgroup since 1969 meeting in the Church Hall. In 2007 the Playgroup became a Preschool and was brought under the umbrella of the Church. St John's Preschool has a separate budget and most of the income is from Government Early Years Education Funding. Sarah Baseley is Head of Preschool and works with, and manages, a team of 5 other staff. For more details see: [www.stjohnswimborne.org.uk/preschool/](http://www.stjohnswimborne.org.uk/preschool/)

*The Preschool team proudly displaying their Ofsted result!*



## Finances (See Appendix 1 for a full Summary)

St John's unrestricted total income increased (36.5%) from £285,849 in 2021 to £390,165 in 2024 and unrestricted total expenditure increased (47.9%) from £310,378 in 2021 to £459,160 in 2024. This was partially due to the decision by the Parochial Church Council to invest in the staff team, appointing a new Associate Minister, Pastoral Care Coordinator and other additional staff roles during 2022, generously funded by the church family. During this period, there has also been a planned schedule of necessary building works, the cost of which has been drawn from reserves.

In 2024, St John's total income (including its restricted funds of Global Action and Preschool) was £529,880 and expenditure was £601,112, showing a deficit of £71,160. Whilst income increased by £17,978 (3.5%), expenditure increased by £72,914 (13.8%). There were exceptional building works during 2024 of £64,408, mainly due to a water leak, accounting for the majority of this deficit.

Many of the church family give sacrificially towards the ministry of St John's. The principal income received by St John's is from giving, which in 2024 amounted to £399,617, including donations to our Global Action partners.

The finances of St John's Pre-School are necessarily included in the PCC's financial statements, together with the Nursery Education Grant, which is received from Central Government through Dorset County Council.

In 2024, St John's paid our full parish share (£115,000) to the Diocese via the CEEC's Ephesian Fund. Our payment covered the cost of ministry at St John's, whilst also contributing to the ministry costs of St Paul's, Canford Heath and Portland Parish.

*The water leak had been active for several months and caused extensive damage*





## LOVING WIMBORNE... AND THE WORLD

We believe God has placed us in Wimborne to be a faithful and visible witness to His love - not only through our words, but through lives marked by service,

*“Seek the peace and prosperity of the city to which I have carried you... Pray to the Lord for it, because if it prospers, you too will prosper”*

**Jeremiah 29:7**

compassion and gospel hope. As we seek to bless our community and beyond, we do so with open hands and hearts, longing for Christ to be made known.

### Outreach

St John’s has a heart for outreach, both within Wimborne and beyond. Activities include several seasonal events, Christianity Explored courses, and new young peoples’ initiatives through our link with the Streetlight Centre. We also provide baptism and marriage preparation and a highlight in the life of St John’s is sharing in the joy of the baptisms, dedications and thanksgivings held during services on those Sundays.

Whilst these provide accessible ways for people to explore faith and connect with the church family, we are conscious there is a lack of ministries reaching people in some areas within the parish and that there is more we could do to reach the growing community we serve.

*“While we must prioritise a superb Bible handler and teacher we also need to set a strategy of engagement with the wider church and community to maximise opportunities.”*

### Partnerships and Links

St John’s has long-term links with local, national and international partners, including our Global Action (mission) partners. We seek to engage ecumenically and link with our local community through partnerships and local events.

*Easter Friday Ecumenical Service on Willow Walk*



## Global Action partners



We actively support 10 Partners (6 families, 1 individual and 3 organisations). The organisations are global and local.

Most of our Global Action Partners were young people at St John's Church. They regularly share prayer news and take part in our services when visiting or by video.

The church benefits greatly from the global perspective that our partners bring. We are inspired by their spiritual maturity and attitude to life and faith - often in very different circumstances to life in Wimborne. It is a privilege to support our Global Action Partners financially and in prayer.

### Other Partnerships

St John's Church works together with the Wessex Gospel Partnership and other local evangelical churches in running training courses and planting churches.

For more details see:

[www.wessexgospelpartnership.org/](http://www.wessexgospelpartnership.org/).



Our Patron is the Church Society - a fellowship contending to reform and renew the Church of England in biblical faith.

St John's subscribes to The Church of England Evangelical Council's (CEEC) 'Basis of Faith'.



## Ecumenical links

Primarily through the Good Friday Walk of Witness and ecumenical service. We would love to see this area of activity grow and develop under the leadership of our new Vicar.



## Other Links

We actively support:



Wimborne Foodbank (we are a registered partner for referrals)



Wimborne Community Food Supply

Who are based at the Allendale Centre in town, where several of the church family volunteer.



We are a Fairtrade church and we encourage church members to use our local shop, Fair Gound.



## Our Buildings – Heritage and Vision

The Church of St John the Evangelist, New Borough and Leigh, was founded in 1876 by Rev Carr Glyn, Rector of Stanbridge and Witchampton for 68 years.



Lord Shaftesbury served as one of the original trustees, with the founders establishing a clear mandate to appoint incumbents "of sound protestant and evangelical views." St John's proudly continues in this Anglican Evangelical tradition today.

Our first Vicar, Rev J B Watson (1876-1894), established the church school, which opened in 1894. The early decades saw thoughtful extensions and alterations to serve our growing community.

### Growing to Serve

The 1970s marked a significant expansion when we added what is now our youth lounge, complete with kitchen and toilet facilities, creating essential space for community gatherings. From 1984 onwards, Wednesday evenings saw this space filled with people gathering for teaching and prayer - a testament to our commitment to spiritual growth. It remains a heavily used space for ministry and community activities.



## A Lighthouse of Hope

1998 brought a pivotal moment when, during a prayer meeting, God gave us a vision of St John's as a 'lighthouse of hope' in the community. This vision led to the creation of our Conservatory with new kitchen and toilet facilities, alongside the refurbishment of our Victorian school hall. Though the path wasn't always smooth, we witnessed God's transforming grace as even initial sceptics became champions of this new facility. Our Lunch Club, born from this vision, continues to thrive nearly 30 years later - truly a cause for thanksgiving!

The 2005 “Build for Life” project embodied our vision of integrating worship with community action. This ambitious undertaking linked our church and community hall with a new entrance, small meeting room, and atrium, while converting existing spaces to better serve both worship and community needs. The modernisation of our church interior - replacing Victorian pews, creating level access throughout, and adding carpeting, improved lighting, and numerous other enhancements - has given us the modern, welcoming complex we enjoy today.

From this transformation emerged our strapline: **New Life & Full Life** - reflecting our commitment to both spiritual renewal and holistic community engagement.

## New Life & Full Life



## The Vicarage - 15 St John's Hill



### **A Welcoming Home for Ministry -**

The Vicarage is an attractive detached Victorian family home offering generous living space ideally suited for both family life and pastoral ministry. Set within well-maintained grounds, the

property features a garage, driveway with parking for several vehicles, and a thoughtfully arranged garden of good proportions.

### **Accommodation**

**Ground Floor** The welcoming entrance leads through a glazed porch to well-proportioned reception rooms including a front dining room and rear lounge that opens onto a delightful south-facing terrace and garden—perfect for relaxation and entertaining. A front study provides an ideal space for sermon preparation, pastoral meetings, or hobbies, while the rear family kitchen with adjacent utility area offers excellent facilities for daily living. A convenient ground-floor w.c. and main staircase complete this level.

**First Floor** Four good-sized bedrooms provide flexible accommodation for family and guests, complemented by a family bathroom and separate w.c. A spacious landing adds to the sense of generous proportions throughout.

**Second Floor** Two useful attic rooms offer additional space, if needed. A rear service stair provides convenient access to this level.

### **Property Care and Support**

Our Buildings Management Group ensures that church buildings are maintained to high standards, providing a safe and suitable environment for ministry and family life. This dedicated group, comprised mainly of volunteers, offers practical oversight and support while reporting regularly to the PCC. Their committed stewardship means that property concerns rarely need to distract from the important work of ministry.

*See Appendix 2 for details of more church properties.*

## Wimborne and the surrounding area

*You are the light of the world. A town built on a hill cannot be hidden. Neither do people light a lamp and put it under a bowl. Instead, they put it on its stand, and it gives light to everyone in the house. In the same way, let your light shine before others, that they may see your good deeds and glorify your Father in heaven.*

**Matthew 5:14-16**

For many years Wimborne has been seen as a town with a higher-than-average number of older people – a statistic Dorset is known for. More recently, the proportion is steadily changing as we see the development of new housing estates in the area. These are attracting many young families including in our own parish, which provides an exciting opportunity for ministry!

Our parish straddles two council districts - see the area profile on Dorset.gov.uk for Wimborne Minster [here](#), and the neighbouring district of Colehill & Wimborne East [here](#). The population of the two combined is likely to have exceeded 20,000 since this census was conducted, due to the thousands of new builds in the area.

Once a Roman Garrison, the market town of Wimborne is the main centre for the rural district of East Dorset. Only 20 minutes from Bournemouth International Airport, with rail links at Bournemouth and Poole. Wimborne is within easy reach of cross-channel ferry services to Europe, the Channel Islands and the Isle of Wight. Sitting on a major artery to the Southwest, Wimborne welcomes UK and international tourists, with its Georgian-era buildings, famous Minster and model town, complemented by its location on the Castleman trailway offering safe cycle routes, walks and bridleways.



At the centre of the town is the Norman-built Minster, on a site used for worship by St. Cuthburga from the 8th century. Wimborne is also home to Baptist, Brethren, Elim, Methodist, New Frontiers, Roman Catholic and Salvation Army churches; many of whom join us for a Walk of Witness and outdoor service on Good Friday, which St. John's has organised since 2016.



In 2006, Wimborne achieved Fairtrade town status, through the combined efforts of the Town council, local businesses, schools and Fairtrade volunteers.

Wimborne Community Gardens opened in 2022, and community gardeners of all abilities help to send 25% of all produce grown directly to the foodbank.



### **Our Local School** (See Appendix 3 for more)

**St John's First School** adjoins the church and, as with the Pre School, enjoys a close working relationship in terms of working together and sharing facilities.

The church uses the playground for car parking on Sundays, and classrooms for children's groups. The school uses the church for weekly acts of worship, small group activities and occasional services and is served by church members for assemblies and school committee members.

The Head of School is Michelle Prince. For more details see:

[www.stjohnswimborne.dorset.sch.uk/](http://www.stjohnswimborne.dorset.sch.uk/)



## Appendix 1: Summary of Finances

**St John's PCC, Wimborne**  
**STATEMENT OF FINANCIAL ACTIVITIES**  
**FOR THE YEAR ENDED 31 DECEMBER 2024**

	Note	Unrestricted Funds £	Restricted Funds £	Endowment Funds £	Total Funds 2024 £	Total Funds 2023 £
<b>INCOME AND ENDOWMENTS FROM:</b>						
Donations and legacies	3	344,726	54,891	-	399,617	379,433
Charitable activities	4	24,177	83,585	-	107,762	108,109
Other trading activities	5	17,324	-	-	17,324	20,488
Investments	6	3,939	1,156	82	5,177	3,872
<b>Total income and endowments</b>		<b>390,165</b>	<b>139,632</b>	<b>82</b>	<b>529,880</b>	<b>511,902</b>
<b>EXPENDITURE ON:</b>						
Charitable activities	7	459,160	141,952	-	601,112	528,198
<b>Total expenditure</b>		<b>459,160</b>	<b>141,952</b>	<b>-</b>	<b>601,112</b>	<b>528,198</b>
<b>Net gains/(losses) on investments</b>		<b>-</b>	<b>-</b>	<b>72</b>	<b>72</b>	<b>272</b>
<b>Net income/(expenditure)</b>		<b>(68,995)</b>	<b>(2,320)</b>	<b>154</b>	<b>(71,160)</b>	<b>(16,024)</b>
<b>Transfers between funds</b>	16	12,106	(12,106)	-	-	-
<b>Net movement in funds</b>		<b>(56,889)</b>	<b>(14,426)</b>	<b>154</b>	<b>(71,160)</b>	<b>(16,024)</b>
<b>Reconciliation of funds:</b>						
Total funds brought forward		923,267	454,832	6,466	1,384,565	1,400,589
<b>Total funds carried forward</b>	16	<b>866,379</b>	<b>440,406</b>	<b>6,620</b>	<b>1,313,405</b>	<b>1,384,565</b>

## **Appendix 2: church properties**

### **Church Office - 71 Leigh Road**

A converted older house with offices to ground and first floors, a long, well-tended rear garden and 4 parking spaces. Next to the parking space is a garage which is now a store for the Church.

The Ground Floor includes two offices, a meeting room and kitchenette. The First Floor includes 2 medium offices, 1 large office and a bathroom.

### **Children and Families Worker's house**

A mid-terrace modern c.1970's house close to the Vicarage. The ground floor has two living rooms, kitchen, w.c. and integral garage. The First Floor includes: 3 bedrooms and a bathroom. The rear garden is partly terraced.

### **Youth Worker's house**

An older style 4-bedroom semi-detached house with a large rear garden on the Leigh Park estate.

The Ground Floor includes lounge, rear conservatory, kitchen/breakfast room and cloakroom. The First Floor includes: 4 bedrooms and a bathroom.

### **Appendix 3: Schools in and around Wimborne**

St John's First School <https://www.stjohnswimborne.dorset.sch.uk/>

Wimborne First School <https://www.wimbornefirst.dorset.sch.uk/>

Colehill First School <https://www.colehillfirst.dorset.sch.uk/>

Hayeswood First School <https://www.hayeswood.dorset.sch.uk/>

Merley First School <https://www.merleyfirstschool.com/>

Pamphill First School <https://www.pamphillfirstschool.org/>

Allenbourn Middle School <https://www.allenbournmiddle.org/>

St Michael's Middle School <https://www.stmichaelsmiddle.org/>

Broadstone Middle School <https://www.bmsweb.co.uk/>

Lockyers Middle School <https://www.lockyersmid.dorset.sch.uk/>

Ferndown Middle School <https://www.fernmid.dorset.sch.uk/>

Beaucroft Foundation Special School <https://www.beaucroft.dorset.sch.uk/>

Queen Elizabeth Upper School <https://www.queenelizabeths.com/>

Corfe Hills School <https://www.corfehills.net/>

Ferndown Upper School <https://fernup.dorset.sch.uk/>

Beaucroft College (Specialist) <https://www.beaucroft.dorset.sch.uk/>

Dumpton School (Private) <https://www.dumpton.com/>

## Appendix 4: Key points of interest in Wimborne

[Wimborne Food Bank](#)

[Wimborne Community Food Supply](#)

[Fair Ground Shop](#)

[The Allendale Centre](#)

[Wimborne Community Centre](#)

[Dreamboats](#)

[The Chained Library](#)

[The Museum of East Dorset](#)

[Wimborne Model Town](#)

[Minster Market](#)

[Dorset Farmers Market](#)

[Walford Mill](#)

[Radio Wimborne](#)

[Planet Wimborne](#)

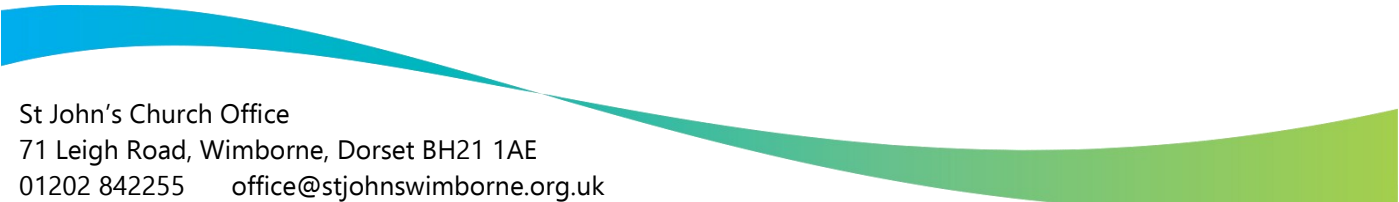
[The Tivoli Theatre](#)

[Wimborne Folk Festival](#)

[Wimborne Literary Festival](#)

Wimborne [Cricket](#), [Rugby](#) and [Football](#) clubs





St John's Church Office  
71 Leigh Road, Wimborne, Dorset BH21 1AE  
01202 842255 [office@stjohnswimborne.org.uk](mailto:office@stjohnswimborne.org.uk)  
[www.stjohnswimborne.org.uk](http://www.stjohnswimborne.org.uk)